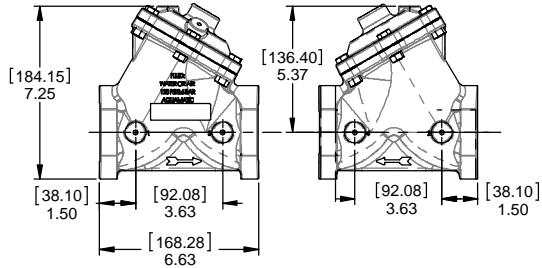


ASSEMBLY TOOLS	
DESCRIPTION	PART NO.
FOR INSTALLATION & REMOVAL OF SEAT (ITEM #2) (TOOL NOT SHOWN)	1074411 (426-MT)
FOR INSTALLATION & REMOVAL OF SHAFT GUIDE (ITEM #10) (TOOL NOT SHOWN)	1074299 (425-GAT)

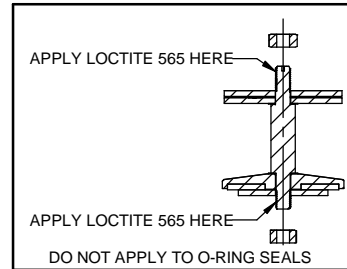
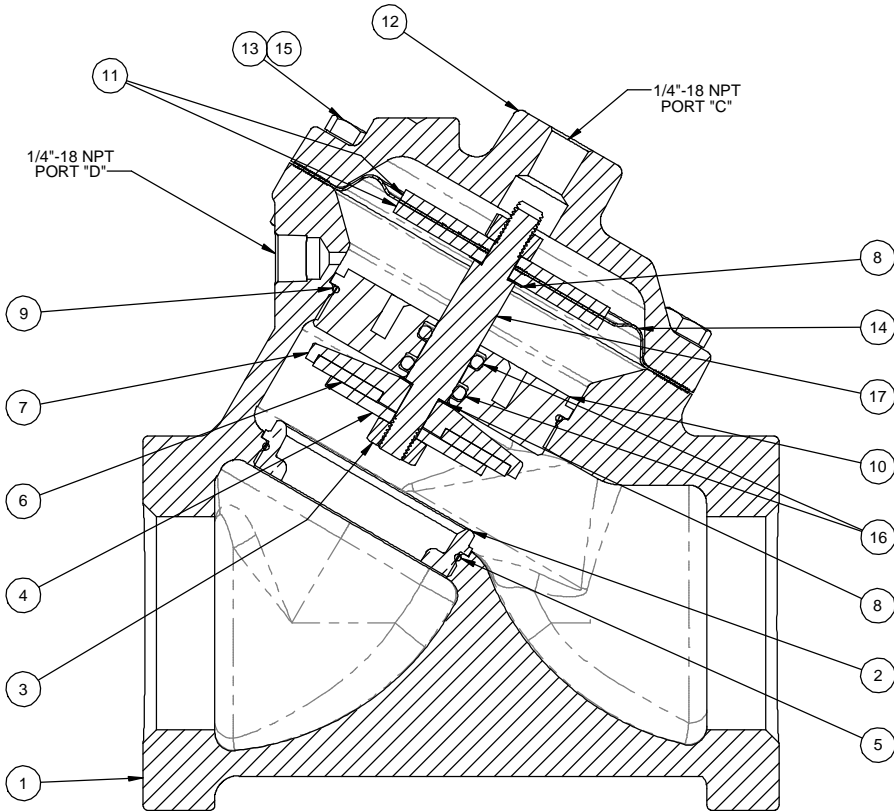
REPAIR PARTS KITS			
DESCRIPTION	PART NO.		
DIAPHRAGM & SEALS KIT CONSISTS OF ITEM NO'S 3(2),5,6,8(2),9,14,16	1070070 (425-RA)	1070083 (425-RAE)	1070095 (425-RAV)
	BUNA N INCLUDES DIAPHRAGM 1074296 (425-FB)	E.P.D.M. INCLUDES DIAPHRAGM 1074296 (425-FB)	FKM INCLUDES DIAPHRAGM 1074297 (425-FV)
	1070120 (425-RF)		
INT. PARTS KIT (NORM. OPEN) CONSISTS OF STANDARD ITEM NO'S 4,7,10,11(2),17			
SEAT (ITEM NO.2)	1074321 (425-MO)		

REVISIONS					
ZONE	ECN	REV.	DESCRIPTION	DATE	APP'D
	103805	N	1-ITEM#2- WAS: BRASS, 2-ITEM#4- WAS:1074220, 3- WAS:1" HEX SOCKET, 4-ITEM#32- WAS: BRASS, 5-UPDATED TITLE BLOCK	18SEP14	TJM
	103881	P	ITEM 19- WAS: 1078476	16OCT14	TJM
	104429	R	1-ITEM#11-WAS: 43761	25MAR15	TJM
	104479	T	1-ITEM# 4- WAS: 1074221	07APR15	TJM
	104732	U	1-ADD'D: TORQUE TABLES	01JUN15	TJM



TORQUE TABLE		
ITEM #	DESCRIPTION	TORQUED TO(+/- 10%)
2	SEAT	120 IN/LBS
3	UPPER NUT	140 IN/LBS
3	LOWER NUT	140 IN/LBS
10	SHAFT GUIDE	120 IN/LBS
13 & 15	NUT, HEX SCREW	140 IN/LBS

NO.	DESCRIPTION	STD	PART NO.	QTY.
1	BODY CAST IRON	2" NPT	1074277 (425-A)	1
2	SEAT (REQ'S ASSY TOOL)	SS	1074321 (425-MO)	1
3	HEX NUT (5/16-24)		1263853	2
4	DISC PLATE	SS	43943	1
5	O-RING	BUNA N	1071682 (ORB-035)	1
		E.P.D.M.	1071724 (ORE-035)	
6	DISC	VITON	1071794 (ORV-035)	1
		BUNA N	1074307 (425-J)	
		E.P.D.M.	1074309 (425-JE)	
		FKM	1074312 (425-JV)	
	HYCAR	1074310 (425-JH)		
7	DISC HOLDER	SS	43731	1
8	GASKET	COPPER	1074252 (424-R)	2
9	O-RING	BUNA N	1071684 (ORB-038)	1
		E.P.D.M.	1071725 (ORE-038)	
		FKM	1071795 (ORV-038)	
10	SHAFT GUIDE (REQ'S ASSY TOOL)	SS	43775	1
11	DIAPHRAGM PLATE	SS	43730	2
12	CAP	CAST IRON	1074281 (425-C)	1
13	HEX SCREW	PLATED STEEL	1072400 (SCZ-0013)	6
14	DIAPHRAGM	BUNA N	1074296 (425-FB)	1
		FKM	1074297 (425-FV)	
15	HEX NUT	PLATED STEEL	1071657 (NUZ-0011)	1
16	O-RING	BUNA N	1071699 (ORB-205TC)	2
		E.P.D.M.	1239009	
		FKM	1239008 (ORV-206)	
17	SHAFT (NORMALLY OPEN)		1074314 (425-L)	1



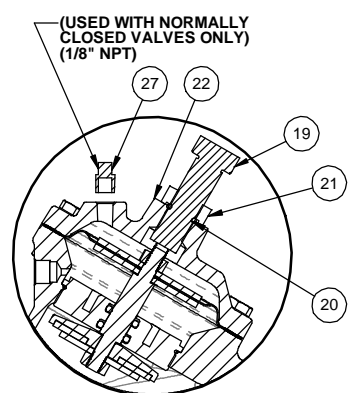
NOTE:

- AMERICAN NATIONAL STANDARD TAPER PIPE THREADS (NPT) PER ANSI B2.1-1968.
- VALVES AVAILABLE WITH B.S.P.T. END CONNECTIONS.

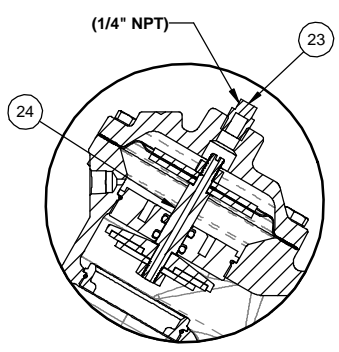
SEE REVERSE SIDE FOR CONFIGURATION OPTIONS

© 2016 AQ Matic Valve and Controls Company, Inc. All rights reserved.		THIRD ANGLE PROJECTION		
APPROVALS	TMS	DATE	06-03-10	
DRAWN	TMS	TITLE		
APPROVED		CATALOG SHEET, 425 DIAPHRAGM VALVE		
CHECKED		SIZE	C	DWG NO. 1077615
		SCALE	1:2	REV U.
		SHEET 1 OF 2		

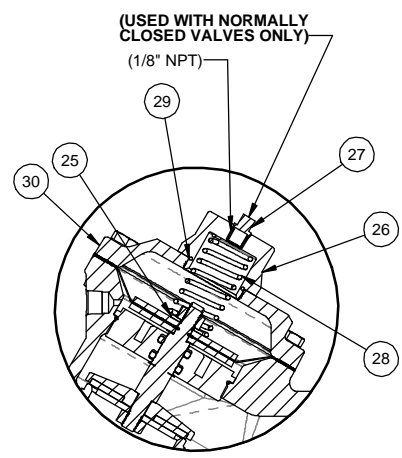
1070035 (V42F-0000-00000) (2" NPT)
NORMALLY OPEN (STANDARD)



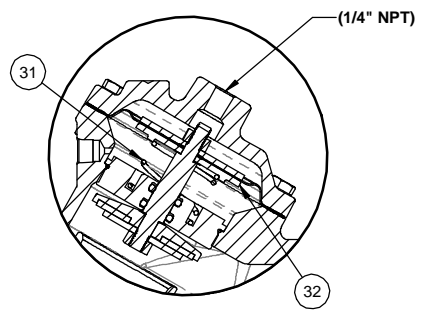
1070037 (V42F-0010-00000) (2" NPT)
LIMIT STOP



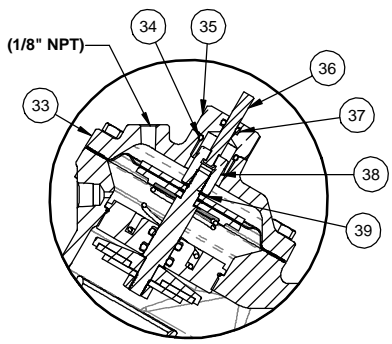
1072894 (V42F-0030-00000) (2" NPT)
NORMALLY CLOSED



1072885 (V42F-0002-00000) (2" NPT)
SPRING ASSIST CLOSED



1070036 (V42F-0001-00000) (2" NPT)
SPRING ASSIST OPEN



1072893 (V42F-0021-00000) (2" NPT)
POSITION INDICATOR

REVISIONS					
ZONE	ECN	REV.	DESCRIPTION	DATE	APP'D
			SEE SHEET ONE FOR LIST OF CHANGES		

NO.	DESCRIPTION	STD	PART NO.	QTY.
LIMIT STOP MODEL				
19	SCREW	•	1078676	1
20	O-RING	•	1071690 (ORB-112)	1
21	NUT, LIMIT STOP	•	1074434 (426-U)	1
22	CAP, 425, NPT, LS	•	1074285 (425-CCC)	1
NORMALLY CLOSED MODEL				
23	PIPE PLUG (1/4" N.P.T.)	PLATED STEEL	• 1071918 (PLZ0008)	1
		BRASS	• 1071904 (PLB-0009)	1
24	SHAFT (NORMALLY CLOSED)	•	1074317 (425-LL)	1
SPRING ASSIST CLOSED MODEL				
25	CENTERING WASHER	BRASS	• 1074083 (421-AH)	1
26	NUT, SPRG RETAINER	BRASS	• 1074430 (428-IT)	1
27	PIPE PLUG (1/8" N.P.T.)	PLATED STEEL	• 1071917 (PLZ-0005)	1
		BRASS	• 1071903 (PLB-0007)	1
28	SPRING	•	1078688	1
29	O-RING	•	1071677 (ORB-025)	1
30	CAP	CAST IRON	• 1074284 (425-CA)	1
SPRING ASSIST OPEN MODEL				
31	SPRING	•	1078692	1
32	DIAPHRAGM PLATE	SS	• 43729	1
POSITION INDICATOR MODEL				
33	CAP	CAST IRON	• 1074288 (425-CF)	1
34	O-RING	•	1071692 (ORB-115)	1
35	SHAFT GUIDE BRUSHING	•	1074121 (421-GF)	1
36	INDICATOR SHAFT	•	1074325 (425-PM)	1
37	O-RING	•	1071688 (ORB-108-TC)	1
38	TOP NUT	•	1074332 (425-TB)	1
39	LOCKWASHER	•	1073590 (TRS-0007)	1

REPAIR PARTS KITS	
DESCRIPTION	PART NO.
INT. PARTS KIT (LIMIT STOP) CONSISTS OF STANDARD ITEM NO'S 19,20,21	1074319 (425-LS)
INT. PARTS KIT (NORM CLOSED) CONSISTS OF STANDARD ITEM NO'S 4,7,10,11(2),24	1070131 (425-RG)
INT. PARTS KIT (SPRING ASSIST CLOSED) CONSISTS OF STANDARD ITEM NO'S 25,28,29	1074329 (425-SC)
INT PARTS KIT (SPRING ASSIST OPEN) CONSISTS OF STANDARD ITEM NO'S 8,31,32	1074331 (425-SO)
INT PARTS KIT (POSITION INDICATOR) CONSISTS OF STD ITEM NO'S 34 THRU39	1074323 (425-PI)

TORQUE TABLE		
ITEM #	DESCRIPTION	TORQUED TO (+/- 10%)
21	NUT, LIMIT STOP	120 IN/LBS
26	NUT, SPRING RETAINER	120 IN/LBS
35	SHAFT GUIDE BUSHING	120 IN/LBS
38	TOP NUT	120 IN/LBS

NOTE:
1. SPRING ASSIST CLOSED MODEL CANNOT BE COMBINED WITH LIMIT STOP MODEL.
2. VALVES AVAILABLE WITH B.S.P.T. END CONNECTIONS.

CONVERSION KITS	
DESCRIPTION	PART NO.
CONVERSION KIT (LIMIT STOP) CONSISTS OF STANDARD ITEM NO'S 19,20,21,22	1074320 (425-LSC)
CONVERSION KIT (SPRING ASSIST CLOSED) CONSISTS OF STANDARD ITEM NO'S 25 THRU 30	1074330 (425-SCC)
CONVERSION KIT (SPRING ASSIST OPEN) CONSISTS OF STADARD ITEM NO'S 8,31,32	1074331 (425-SO)
CONVERSION KIT (POSITION INDICATOR) CONSISTS OF STANDARD ITEM NO'S 33 THRU 39	1074324 (425-PIC)

SEE REVERSE SIDE FOR STANDARD NORMALLY OPEN MODEL.

COMPONENTS / ASSEMBLIES TO BE COMPLIANT AND COMPATIBLE WITH EUROPEAN UNION DIRECTIVE 2011/65/EC (ROHS2) & REGULATION (EC) 1907/2006 (REACH) REQUIREMENTS

© 2016 AQ Matic Valve and Controls Company, Inc. All rights reserved.

THIRD ANGLE PROJECTION

APPROVALS: TMS DATE: 06-03-10

DRAWN: TMS

APPROVED:

CHECKED:

DO NOT SCALE DRAWING. DIMS. ARE IN INCHES (mm) UNLESS OTHERWISE SPECIFIED.
INTERPRET DIMS AND TOLERANCES PER ASME Y14.5M-2009
ALL FINISHED MACHINED SURFACES 125 √ OR BETTER.
TOLERANCES:
ANGLES: ± .1°
1 PLACE .XX: ± .015 (0.38)
2 PLACE .XX: ± .01 (0.3)
3 PLACE .XXX: ± .005 (0.13)

TITLE: CATALOG SHEET, 425 DIAPHRAGM VALVE

SIZE: C DWG NO: 1077615 REV U.

SCALE: 1:2 SHEET 2 OF 2